



Cisco 640-801

Cisco Certified Network Associate (CCNA)

Q&A Demo

English: www.TestInside.com

BIG5: www.Testinside.net

GB: www.Testinside.cn

TestInside, help you pass any IT exam!

Copyright

TestInside reserves the right to take legal action against you according to the International Copyright

Laws if the pdf file is being distributed by you.

1. Which connections allow the use of full-duplex Ethernet?(Choose three.)

- A. switch to host
- B. switch to switch
- C. hub to hub
- D. switch to hub
- E. host to host

Answer: ABE

2. Which of the following statements are true regarding bridges and switches? (Choose 3.)

- A. Switches are primarily software based while bridges are hardware based.
- B. Both bridges and switches forward Layer 2 broadcasts.
- C. Bridges are frequently faster than switches.
- D. Switches have a higher number of ports than most bridges.
- E. Bridges define broadcast domains while switches define collision domains.
- F. Both bridges and switches make forwarding decisions based on Layer 2 addresses.

Answer: BDF

3. Which of the following host addresses are members of networks that can be routed across the public Internet?

(Choose three.)

- A. 10.172.13.65
- B. 172.16.223.125
- C. 172.64.12.29
- D. 192.168.23.252
- E. 198.234.12.95
- F. 212.193.48.254

Answer: CEF

4. Which command is required for connectivity in a Frame Relay network if Inverse ARP is not operational?

- A. frame-relay arp
- B. frame-relay map
- C. frame-relay interface-dlci

D. frame-relay lmi-type

Answer: B

5. After the show ip route command has been entered, the following routes are displayed. Which route will not be entered into the routing table of a neighboring router?

A. R 192.168.8.0/24 [120/1] via 192.168.2.2, 00:00:10, Serial0

B. R 192.168.11.0/24 [120/7] via 192.168.9.1, 00:00:03, Serial1

C. C 192.168.1.0/24 is directly connected, Ethernet0

D. R 192.168.5.0/24 [120/15] via 192.168.2.2, 00:00:10, Serial0

Answer: D

6. What is a global command?

A. a command that is available in every release of IOS, regardless of the version or deployment status

B. a command that can be entered in any configuration mode

C. a command that is universal in application and supports all protocols

D. a command that is implemented in all foreign and domestic IOS versions

E. a command that is set once and affects the entire router

Answer: E

7. All WAN links inside the ABC University network use PPP with CHAP for authentication security. Which command will display the CHAP authentication process as it occurs between two routers in the network?

A. show CHAP authentication

B. show interface serial0

C. debug PPP authentication

D. debug CHAP authentication

E. show ppp authentication chap

Answer: C

8. It has become necessary to configure an existing serial interface to accept a second Frame Relay virtual circuit.

Which of the following procedures are required to accomplish this task? (Choose three.)

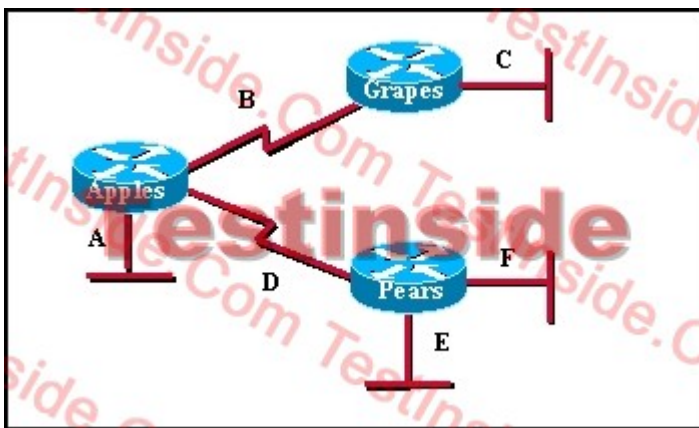
A. Remove the IP address from the physical interface.

- B. Encapsulate the physical interface with multipoint PPP.
- C. Create the virtual interfaces with the interface command.
- D. Configure each subinterface with its own IP address.
- E. Disable split horizon to prevent routing loops between the subinterface networks.
- F. Configure static Frame Relay map entries for each subinterface network.

Answer: ACD

9. The RIP network shown in the graphic has been fully operational for two days. Each routing table is complete.

Which networks will be included in the next routing update from the Apples router to the Pears router?



- A. A,B,C,D,E,F
- B. A,C
- C. A,B,C,D
- D. B,D
- E. D,E,F
- F. A,B,C

Answer: F

10. How should a router that is being used in a Frame Relay network be configured to avoid split horizon issues from preventing routing updates?

- A. Configure a separate sub-interface for each PVC with a unique DLCI and subnet assigned to the sub-interface.
- B. Configure each Frame Relay circuit as a point-to-point line to support multicast and broadcast traffic.
- C. Configure many sub-interfaces on the same subnet.
- D. Configure a single sub-interface to establish multiple PVC connections to multiple remote router interfaces.

Answer: A

11. A Cisco router that was providing Frame Relay connectivity at a remote site was replaced with a different vendor's frame relay router. Connectivity is now down between the central and remote site. What is the most likely cause of the problem?

- A. mismatched LMI types
- B. incorrect DLCI
- C. mismatched encapsulation types
- D. incorrect IP address mapping

Answer: C

12. Given the partial outputs displayed in the graphic, which switch device would be the spanning tree root bridge for a network of only these four devices?

```
Tampa#show spanning-tree

Spanning tree 1 is executing the IEEE compatible Spanning Tree protocol
Bridge Identifier has priority 32768, address 0002.fd29.c505
Configured hello time 2, max age 20, forward delay 15
-----

Miami#show spanning-tree

Spanning tree 1 is executing the IEEE compatible Spanning Tree protocol
Bridge Identifier has priority 16384, address 0002.fd29.c504
Configured hello time 2, max age 20, forward delay 15
-----

London#show spanning-tree

Spanning tree 1 is executing the IEEE compatible Spanning Tree protocol
Bridge Identifier has priority 8192, address 0002.fd29.c503
Configured hello time 2, max age 20, forward delay 15
-----

Cairo#show spanning-tree

Spanning tree 1 is executing the IEEE compatible Spanning Tree protocol
Bridge Identifier has priority 4096, address 0002.fd29.c502
Configured hello time 2, max age 20, forward delay 15
```

- A. Tampa
- B. Miami
- C. London
- D. Cairo

Answer: D

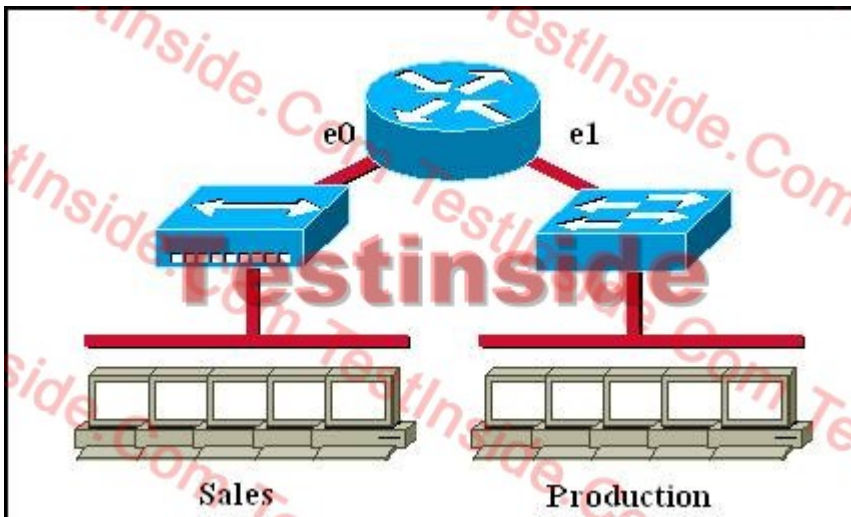
13. The administrator is unable to establish connectivity between two Cisco routers. Upon reviewing the command output of both routers, what is the most likely cause of the problem?

RtrA# show running-config	RtrB# show running-config
<some output text omitted>	<some output text omitted>
enable password cisco	enable password cisco1
!	!
hostname RtrA	hostname RtrB
username RtrB password cisco	username RtrA password cisco1
!	!
interface serial 0/0	interface serial 0/0
ip address 10.0.8.1 255.255.248.0	ip address 10.0.15.2 255.255.248.0
encapsulation ppp	encapsulation ppp
ppp authentication chap	ppp authentication chap

- A. Authentication needs to be changed to PAP for both routers.
- B. Serial ip addresses of routers are not on the same subnet.
- C. Username/password is incorrectly configured.
- D. Router names are incorrectly configured.

Answer: C

14. Which of the following statements describe the network shown in the graphic? (Choose two.)



- A. There are two broadcast domains in the network.
- B. There are four broadcast domains in the network.
- C. There are six broadcast domains in the network.
- D. There are four collision domains in the network.
- E. There are five collision domains in the network.

F. There are seven collision domains in the network.

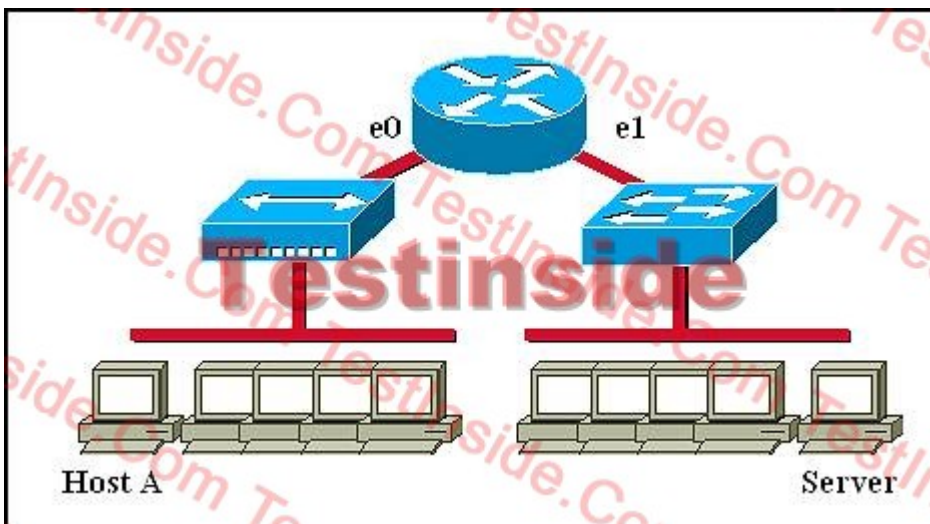
Answer: AF

15. Which of the following are characteristics of a Frame Relay point-to-point subinterface? (Choose two.)

- A. requires use of Inverse ARP
- B. resolves NBMA split horizon issues
- C. requires the frame-relay map command
- D. maps one IP subnet per DLCI
- E. maps one IP subnet across multiple DLCIs

Answer: BD

16. Refer to the graphic. Host A is communicating with the server. What will be the source MAC address of the frames received by Host A from the server?



- A. the MAC address of router interface e0
- B. the MAC address of router interface e1
- C. the MAC address of the server network interface
- D. the MAC address of host A

Answer: A

17. When variable length subnet masking is used, what does the term route aggregation describe?

- A. calculating the total number of available host addresses in the AS
- B. combining routes to multiple networks into one supernet

- C. reducing the number of unusable addresses by creating many subnets from one supernet
- D. reclaiming unused address space by changing the subnet size

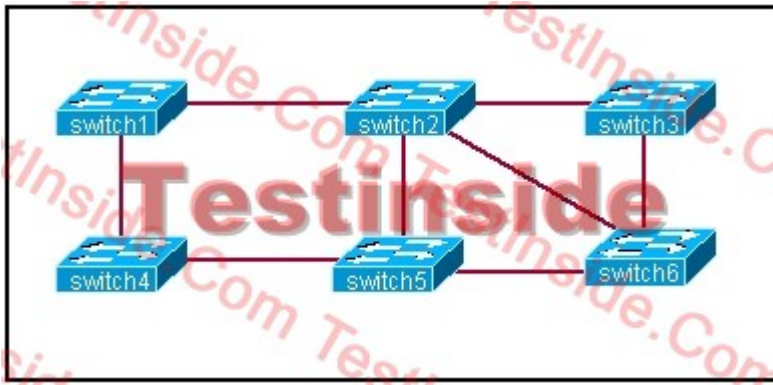
Answer: B

18. On three different occasions an administrator configured a router, and after testing the configuration saved it to NVRAM by issuing the copy running-config startup-config command. After each successful save the administrator issued the reload command. Each time when the router restarted, the router appeared to have the default blank configuration. What could cause such results?

- A. The boot system commands were left out of the configuration.
- B. The NVRAM is corrupted.
- C. The configuration register setting is incorrect.
- D. The upgraded IOS just loaded is not compatible with the hardware.
- E. The upgraded configuration is not compatible with the hardware platform.

Answer: C

19. Based on the network shown in the graphic which option contains both the potential networking problem and the protocol or setting that should be used to prevent the problem?



- A. routing loops, hold down timers
- B. switching loops, split horizon
- C. routing loops, split horizon
- D. switching loops, VTP
- E. routing loops, STP
- F. switching loops, STP

Answer: F

20. If an ethernet port on a router was assigned an IP address of 172.16.112.1/20, what is the maximum number of hosts allowed on this subnet?

- A. 1024
- B. 2046
- C. 4094
- D. 4096
- E. 8190

Answer: C