



Cisco 642-801

Cisco® Building Scalable Cisco Internetworks(BSCI)

Q&A Demo

English: www.TestInside.com

BIG5: www.Testinside.net

GB: www.Testinside.cn

TestInside, help you pass any IT exam!

1. The following output was seen on router Dev-1 and Dev-3:

```
Dev-1#sh ip ospf neighbor
```

Neighbor ID	Pri	State	Dead Time	Address	Interface
10.200.200.13	1	FULL/BDR	00:00:33	10.1.1.3	Ethernet0/0

Testinside

```
Dev-3#sh ip ospf neighbor
```

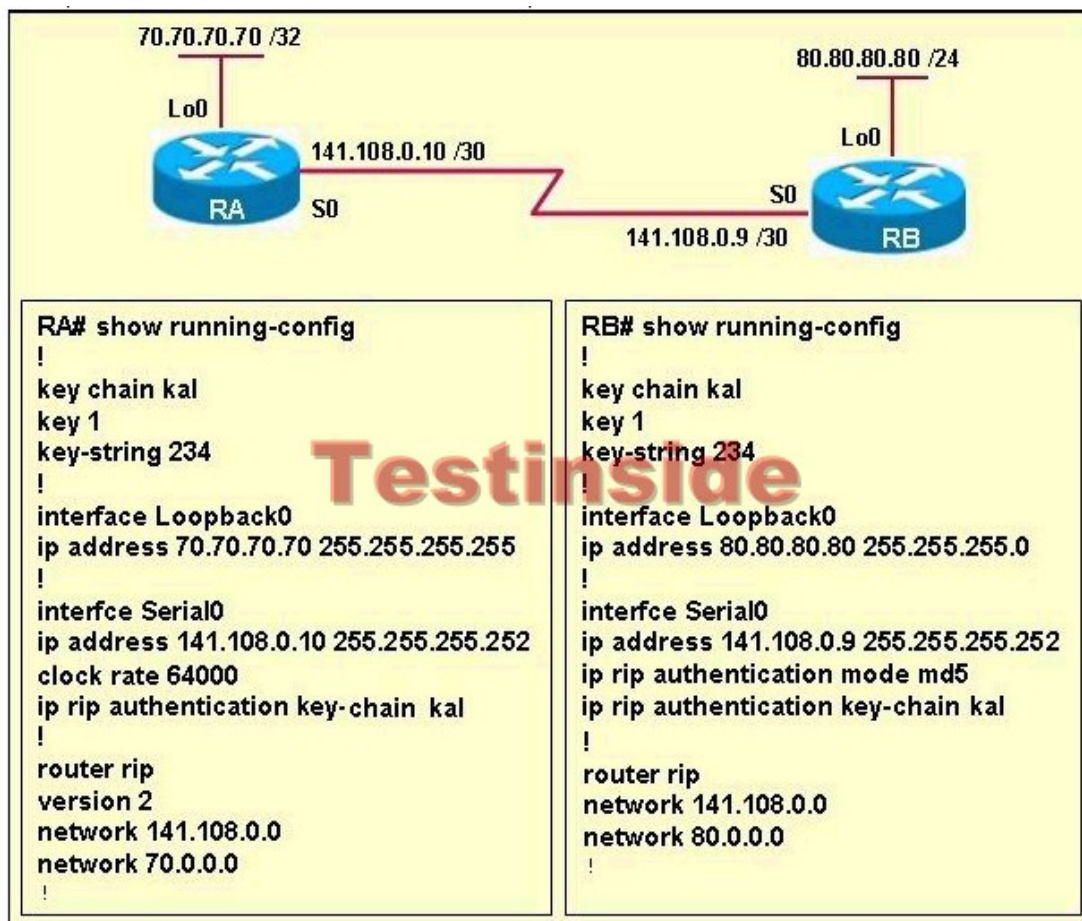
Neighbor ID	Pri	State	Dead Time	Address	Interface
172.31.1.1	2	FULL/DR	00:00:31	10.1.1.1	Ethernet0/0

The Dev-1 and Dev-3 routers are OSPF neighbors over the Ethernet 0/0 connection. Based on the show ip ospf neighbor output from the Dev-1 and Dev-3 routers, which statement is true?

- A. Dev-1 is the DR because it has a higher OSPF router priority.
- B. Dev-1 is the DR because it has a lower OSPF router ID.
- C. Dev-3 is the DR because it has a higher OSPF router priority.
- D. Dev-3 is the DR because it has a lower OSPF router ID.
- E. Both Dev-1 and Dev-3 are using the default OSPF router priority.

Answer: A

2. Refer to the exhibit.



Router RA is not able to ping the loopback Lo0 on

Router RB. What could the problem be?

- A. The loopback addresses have different subnet masks.
- B. Router RA is using RIP version 1 while Router RB is using RIP version 2.
- C. Router RA is using plain text authentication while Router RB is using encrypted authentication.
- D. MD5 authentication is not possible with RIP.
- E. The key strings do not match.
- F. The key chains do not match.

Answer: C

3. When the BGP path selection process is being performed on a Cisco router, which BGP attribute is used first when determining the best path?

- A. Local preference
- B. MED

- C. Weight
- D. Origin
- E. Next-hop
- F. AS-path

Answer: C

4. Which two are characteristics of the IS-IS protocol but not OSPF? (Choose two.)

- A. provides for network scalability by allowing the network to be separated into areas
- B. provides routing support for multiple network layer protocols
- C. three layers of hierarchical routing
- D. utilizes SPF algorithm
- E. forms adjacencies with all neighbors
- F. supports demand circuit routing

Answer: B, E

5. OSPF are similar in many ways, but there are some important differences between them. Which three characteristics apply to IS-IS but not to OSPF? (Choose three)

- A. Encapsulates PDUs directly into a data-link frame.
- B. Uses a DIS and a backup DIS to present the pseudo-node on the LAN.
- C. Uses stubby areas to improve network scalability.
- D. Uses a default IOS metric of 10 on each interface.
- E. Runs PRC (Partial Calculations) to calculate IP reachability information.
- F. Uses an on-demand circuit to reduce the hello and LSA flooding across switched WAN links, such as ISDN.

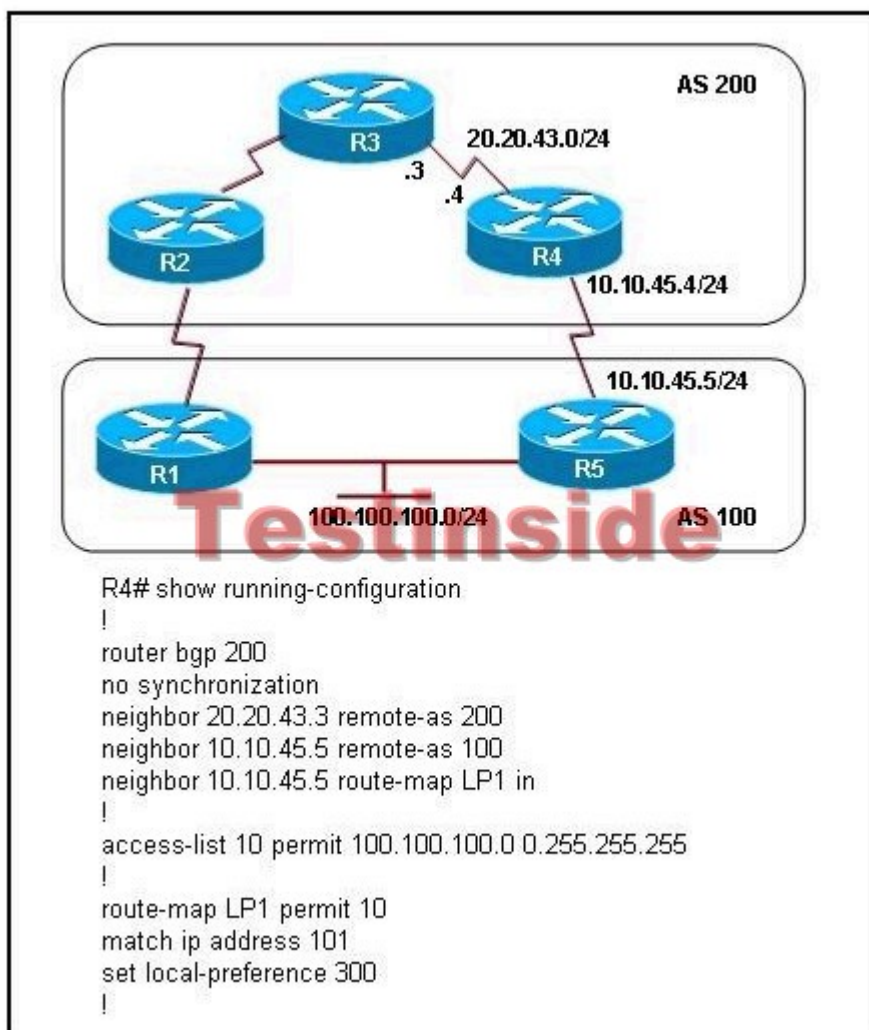
Answer: A, D, E

6. What are two routing protocols defined by the OSI protocol suite at the network layer? (Choose two.)

- A. End System-to-End System
- B. Routing Information Protocol
- C. Interior Gateway Routing Protocol
- D. End System-to-Intermediate System
- E. Intermediate System-to-Intermediate System

Answer: D,E

7. Refer to exhibit.



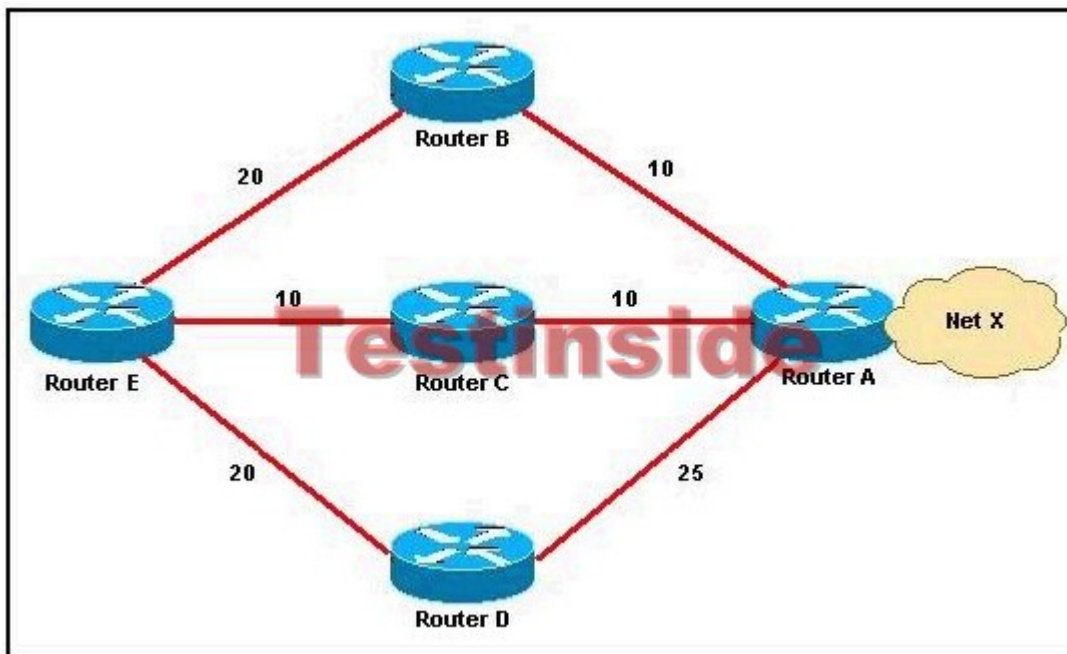
BGP is configured on all routers, synchronization is turned off, and none of the default attributes have been changed except the local preference attribute on R 4. Which path will be preferred by R 2 to reach the network

100.100.100.0/24?

- A. R 2 - R 3 - R 4 - R 5 because it has a lower admin distance
- B. R 2 - R 3 - R 4 - R 5 because it has a higher local preference
- C. R 2 - R 1 because it has the shortest AS-path
- D. R 2 - R 1 because it has a lower local preference

Answer: B

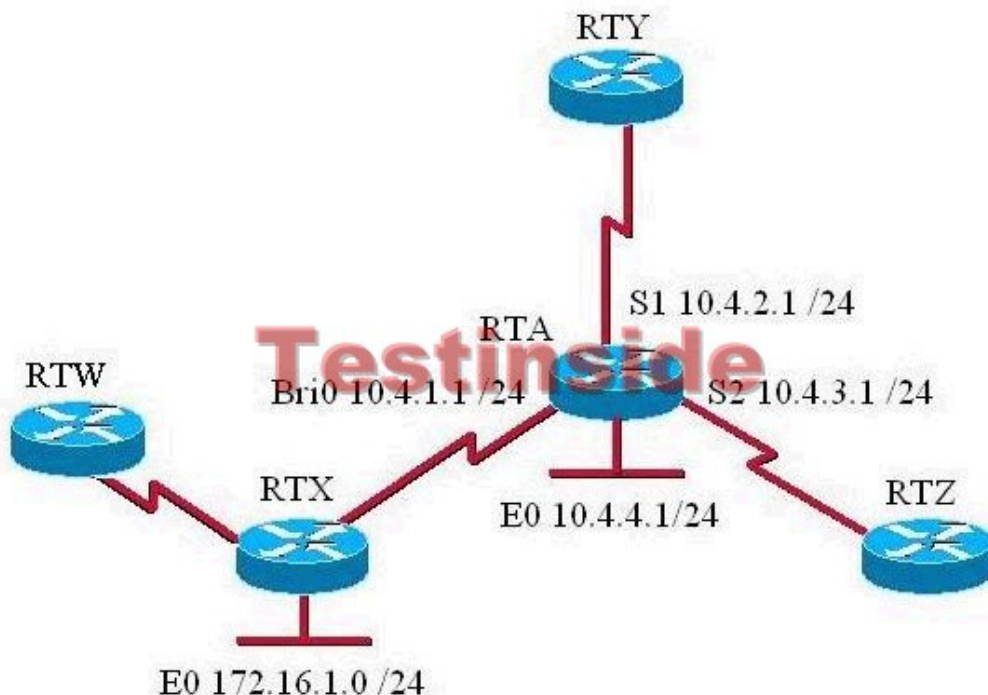
8. Router E is configured with the EIGRP variance 2 command. What path will Router E take to reach Router A?



- A. only E- D- A
- B. only E- B- A
- C. only E- C- A
- D. both E- B- A and E- C- A
- E. E. both E- B- A and E- D- A
- F. all available paths.

Answer: D

9. You are the network engineer at TestInside . The router topology for the TestInside network is shown in the following graphic:



Router RTA is configured as follows:

```
RTA(config)#router rip
RTA(config-router)#network 10.0.0.0
RTA(config-router)#distribute-list 44 in interface BRI0
RTA(config-router)#exit
RTA(config)#access-list 44 deny 172.16.1.0 0.0.0.255
RTA(config)#access-list 44 permit any
```

What are the effects of this RIP configuration on router RTA? (Choose two)

- A. No routing updates will be sent from interface BRI0 on router RTA to router RTX.
- B. Router RTA will not advertise the 10.0.0.0 network to router RTX.
- C. The route network 172.16.1.0 will not be entered into the routing table on router RTA.
- D. User traffic from the 172.16.1.0 network is denied by access-list 44.
- E. The routing table on router RTA will be updated with the route to router RTW.

Answer: C, E

10. Which of the following three statements correctly describe the characteristics of IS-IS? (Select three)

- A. L1 routers have no knowledge about routes outside their area.
- B. L1/L2 routers maintain a separate Level 1 link-state database and a Level 2 link-state database; they do not advertise L2 routes to L1 routers.
- C. To route packets to another area, L1 routers must forward the packets to the L2 router of the destination area.
- D. To route packets to another area, L1 routers must forward the packets to an L1/L2 router within their area.
- E. L2 routers form adjacencies with L1 and L1/L2 neighbors.

Answer: A, B, D